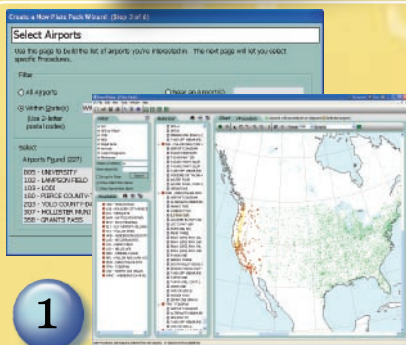




Never Pay for Procedures Again!™

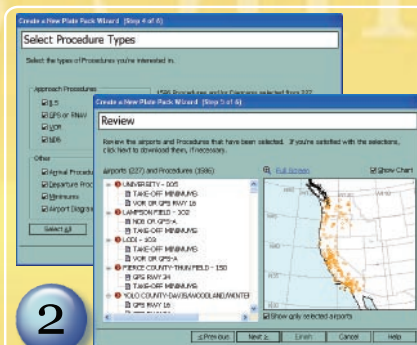
SmartPlates On-Demand Procedures are the easiest and most cost effective way to manage your IFR flight bag. Always current through your Internet connection, you decide what plates you want to print for your next flight.

Whenever you print a PlatePack (groups of plates), you will know it is current. You may create as many PlatePacks as you like, and airports may be sorted any way you wish. With the Pocket PC add-on version, you can download to your HP iPaq, Dell Axim, or other Pocket PC PDA.



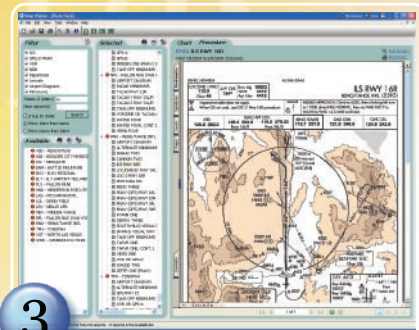
1

- First, start the PlatePack wizard & select the method you prefer to create your PlatePack.
- From a Voyager Flight Plan
 - Define a route by airport & navaid identifiers
 - Choose airports directly from the chart
 - Choose airports within a certain distance from any point



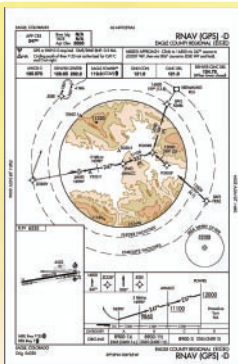
2

- Second, select any or all of the type of plates you want; SIDs/STARs, airport diagrams, ILS, GPS, VOR approaches:
- SmartPlates filters only those you choose and shows you the available airports
 - Drag & Drop or select the + icon to add any additional airports or approaches you want in your PlatePack

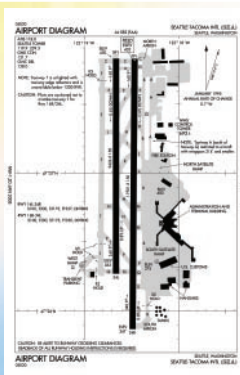


3

- Third, make any minor finishing touches and save your PlatePack:
- View your selected airports on the chart, add or remove until you have what you will need for alternates and weather diversions
 - Save & name your PlatePack. You are now ready to print, view or download to a laptop, tablet or PDA
 - Print full page or kneebord, two per page, or even double-sided to save paper



- SmartPlates includes all 12,000+ IAPs for all fifty states:
- ILS, LOC
 - GPS, RNAV
 - VOR, DME
 - NDB
 - LDA, SDF, MLS



- SmartPlates also features:
- All Terminal Arrival Procedures, STARs/APs
 - All Terminal Departure Procedures, SIDs/DPs
 - Runway & taxiway diagrams
 - Takeoff minimums

SmartPlates For the PocketPC

Plans change...now with the new *SmartPlates for the Pocket PC* you will never have to worry about being caught without a current plate.

- Easy to use:
- Download PlatePacks with one click
 - Oversize buttons
 - Logical interface
 - All US plates fit on a 1 GB memory card (most plates fit on a 512 MB card)
 - Runs on any Pocket PC 2000, 2002 or 2003 (HP iPaq, Dell Axim, Jornada, Casio Cassiopeia, etc.)

