

YAKIMA, WASHINGTON

AL-465 (FAA)

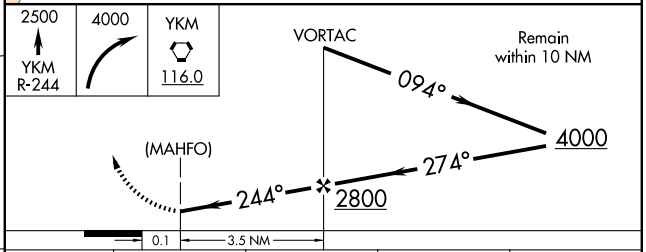
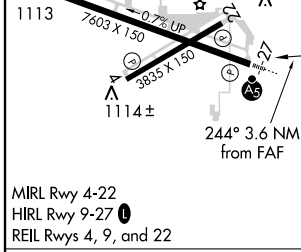
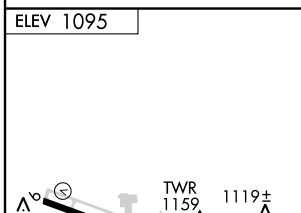
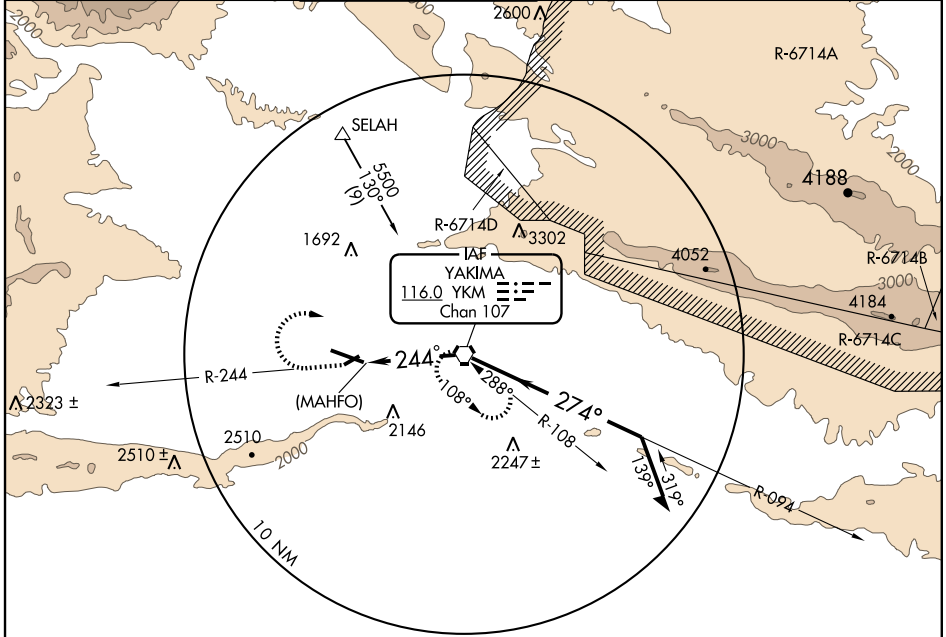
# VOR or GPS-A

YAKIMA AIR TERMINAL/MCALLISTER FIELD (YKM)

VORTAC YKM <b>116.0</b> Chan 107	APP CRS <b>244°</b>	Rwy Idg TDZE Apt Elev N/A N/A 1095
--	------------------------	---

Circling not authorized South of Rwy 9-27.	MISSED APPROACH: Climb to 2500 via YKM R-244 then climbing right turn to 4000 direct YKM VORTAC and hold.
--	---

ATIS <b>125.25</b>	CHINOOK APP CON* <b>123.8 263.15</b>	YAKIMA TOWER* <b>133.25 (CTAF) 257.8</b>	GND CON <b>121.9</b>	CLNC DEL <b>121.9</b>	UNICOM <b>122.95</b>
-----------------------	---	---	-------------------------	--------------------------	-------------------------



FAF to MAP 3.5 NM		CATEGORY	A	B	C	D
Knots	60 90 120 150 180	CIRCLING	1780-1	685 (700-1)	1780-2 685 (700-2)	1840-2½ 745 (800-2½)

YAKIMA, WASHINGTON  
Amdt 6 04218

YAKIMA AIR TERMINAL/MCALLISTER FIELD (YKM)  
46°34'N-120°33'W  
VOR or GPS-A